

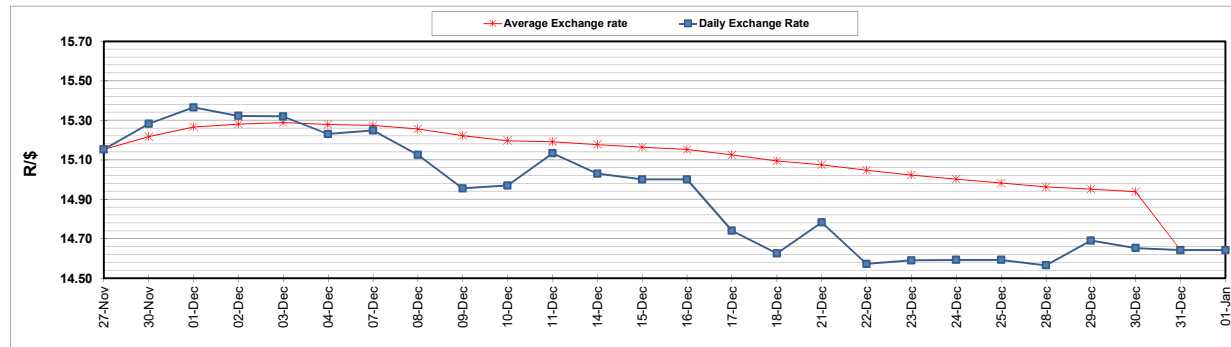
	PETROL 95 ULP	PETROL 93 ULP & LRP	DIESEL 0.05%	DIESEL 0.005%	ILL. PAR.
GAUTENG PUMP PRICE (SA c/l) AS FROM 06/01/2021	1,486.000	1,469.000	-	-	-
WHOLESALE PRICE (SA c/l) AS FROM 06/01/2021	-	-	1,300.420	1,301.820	739.688
SINGLE NATIONAL MAXIMUM RETAIL PRICE	-	-	-	-	930.000
BASIC FUEL PRICE - 01/01/2021 (SA c/l)	542.786	536.942	549.097	551.502	535.509
PRESS RELEASE CONTRIBUTION TO BFP 31/12/2020 - 01/01/2021 (SA c/l)	479.170	469.170	486.630	489.030	472.128
UNIT OVER/(UNDER) RECOVERY - 01/01/2021 (SA c/l)	(63.616)	(67.772)	(62.467)	(62.472)	(63.381)
AVERAGE BASIC FUEL PRICE 31/12/2020 - 01/01/2021	540.802	534.957	546.947	549.353	533.475
AVERAGE UNIT OVER/(UNDER) RECOVERY 31/12/2020 - 01/01/2021	(61.632)	(65.787)	(60.317)	(60.323)	(61.347)

### ANALYSIS MOVEMENT OF AVERAGE OVER/(UNDER) RECOVERY

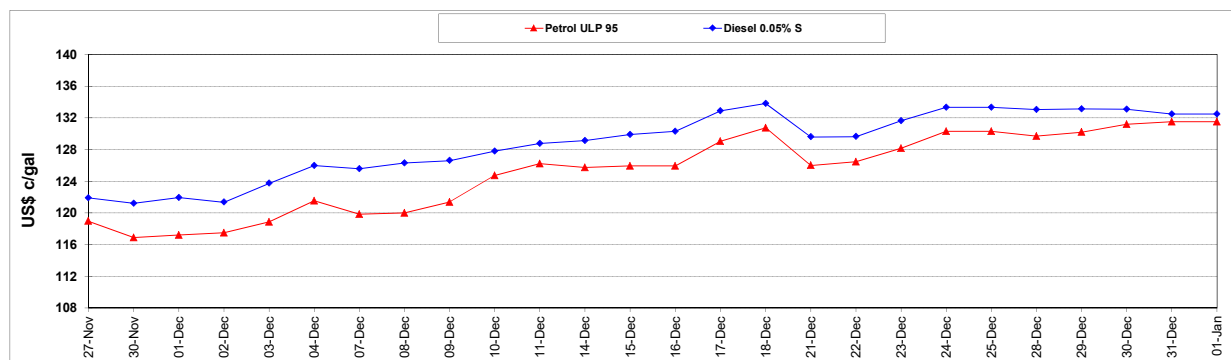
	PETROL 95	PETROL 93	DIESEL 0.05%	DIESEL 0.005%	ILL. PAR.
- MOVEMENT IN INTERNATIONAL PRODUCT PRICES	(72.613)	(76.649)	(71.423)	(71.478)	(72.179)
- MOVEMENT IN EXCHANGE RATE	10.981	10.862	11.106	11.155	10.832
AVERAGE UNIT OVER/(UNDER) RECOVERY 31/12/2020 - 01/01/2021	(61.632)	(65.787)	(60.317)	(60.323)	(61.347)

**R/\$ EXCHANGE RATE - (R/\$14.6418 - 01/01/2021)**

### EXCHANGE RATE USED IN BASIC FUEL PRICE



### INTERNATIONAL PRODUCT PRICES OF BASKET USED IN BASIC FUEL PRICE



### BASIC FUEL PRICE IN SA CENTS PER LITRE

